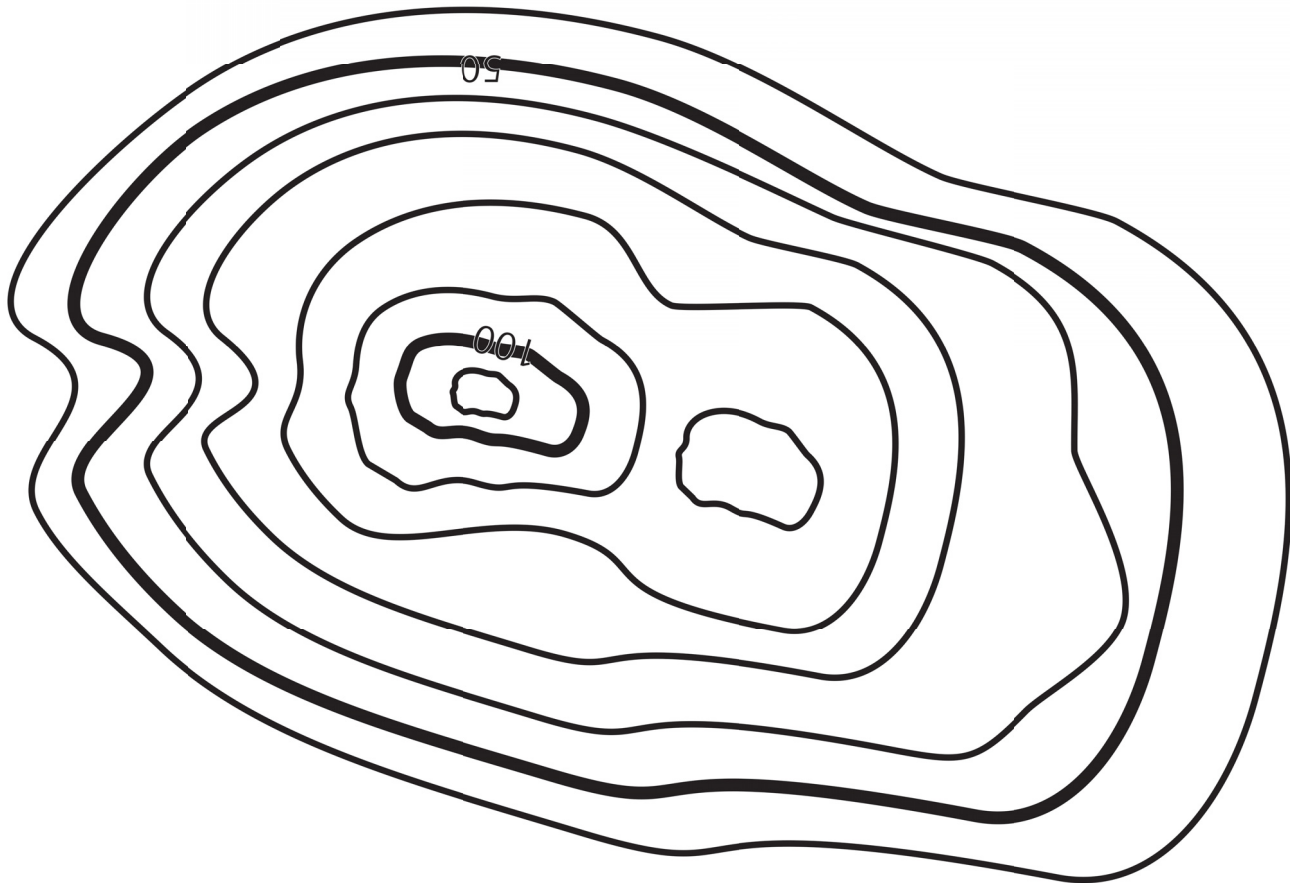


Navigation: Contours Lines



The diagram above represents a hill with two peaks, using contour lines, similar to the one shown in 3D on the right.

1) Identify the following points on the diagram.

- A) The highest point.
- B) The place there is most likely to be a stream.
- C) The steepest point.
- D) The flattest point.

2) How high is the right hand peak?

3) Why are the numbered contours thicker?

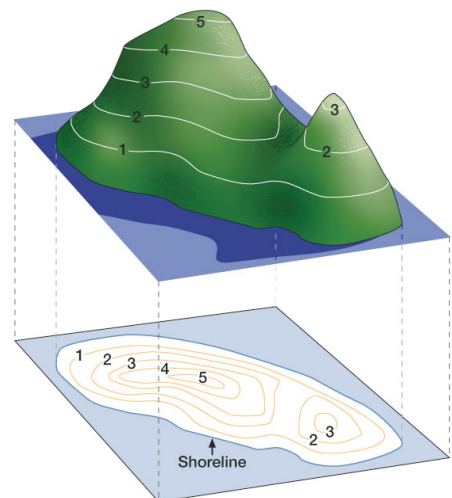


Illustration from 'Hill Walking' © MLTUK VG 2003