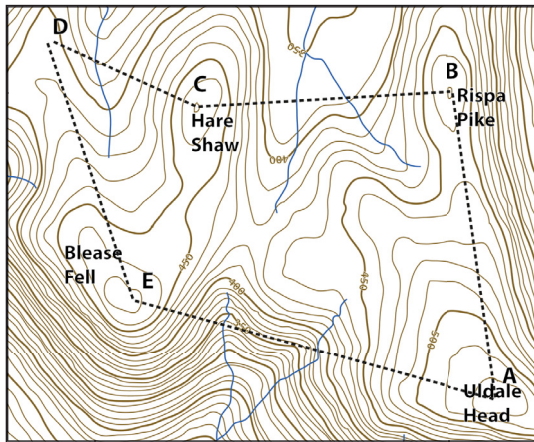


# Navigation: Advanced Contour Lines

These next exercises are advanced. If you can do the first exercise and get 4 factors in the second one then your theoretical understanding of contours is probably above that necessary for a gold expedition!

## Find the start point

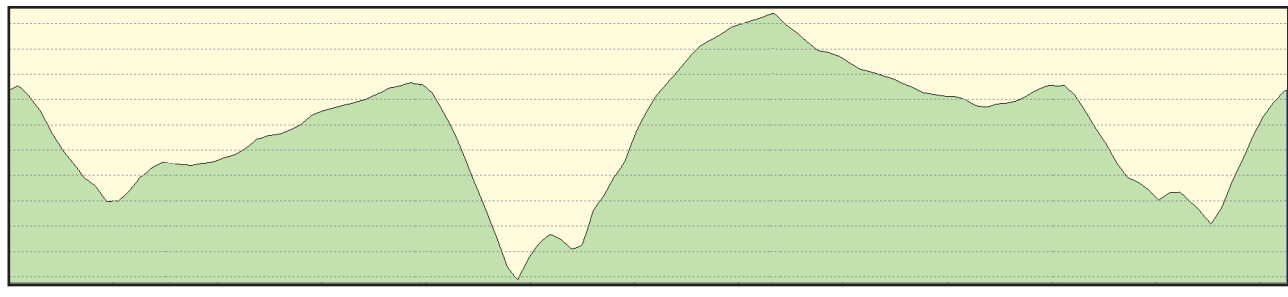


Mapping generated from <https://www.openstreetmap.org>

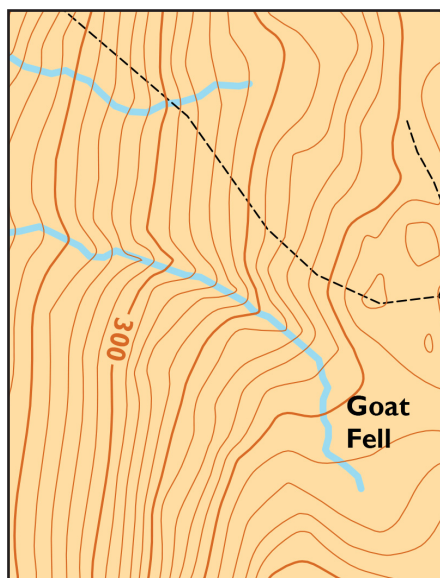
Looking at the elevation profile (below) of the circular walk shown on the left. Determine at which letter the walk starts and ends.

Start / End point is .....

Is the walk clockwise or anti-clockwise?  
.....



## Which way is up?



Mapping generated from <https://oomap.co.uk/>

On the map to the left is the top of the hill on the left or the right of the map segment?  
.....

I can see 4 features that indicate which side the top of the hill is on. How many can you identify?

- 1) .....
- 2) .....
- 3) .....
- 4) .....